

San Clemente Villas is a non-denominational rental community with 68 units designed to provide housing for very low-income elderly. It is owned and operated by St. Clement Housing, Inc., a non-profit corporation operating under the rules and regulations of the United States Department of Housing and Urban Development (HUD).



To help you see if you qualify for an apartment, please fill out the worksheet below (use annual amounts)

WORKSHEET

Wages	\$	_____
Soc. Sec. Income	\$	_____
S.S.I. Income	\$	_____
Pension Income	\$	_____
Interest Income	\$	_____
Any Other Income	\$	_____
Total Income	\$	_____

(is this amount less than \$20,800.00 for 1 person or \$23,800.00 for 2 persons?)

If so, your rent would be calculated as follows:

Divide Total Income by 12
\$ _____

Multiply Total x.30 \$ _____

This would be your maximum monthly rent.

You may also qualify for some medical deductions (what you pay out of your pocket) and be given \$50.00 per month to help pay your electric bill.

We invite you to visit with our manager regarding an application and a place on our waiting list.

San Clemente Villas Apartments

A non-denominational Housing Facility



**1102 No. Alexander St.
Plant City, FL 33563**

**813-752-2417
TTY-711**



**Shelter Ministry of the
Diocese of Saint Petersburg**

QUESTIONS AND ANSWERS CONCERNING

SAN CLEMENTE VILLAS

A non-Denominational Housing Facility

How old do you have to be?

Applicants must be at least 62 years of age at time of application.

Is there a limit on my income?

Yes, your gross income must be less than the established HUD guidelines in order for you to qualify.

How much rent do I pay?

The maximum rent you will pay will be 30% of your adjusted gross income.

Are the apartments furnished?

So that your apartment will truly look like your own home, you will bring your own furniture and familiar possessions and furnishings.

What is provided with the apartment?

Each apartment kitchen is furnished with a refrigerator and stove. In addition each apartment is provided with beautiful carpeting/tile, blinds, and individual central heat and air conditioning.

What special features are included with the apartments?

Each apartment has a smoke detector. The bedroom and bathroom have an emergency pull cord that may be used for assistance in times of an emergency or serious illness. The bathrooms are equipped with “grab bars”.

Will residents be able to control heating and air conditioning in the apartments?

Yes, for complete comfort, each apartment has its own central heating and air conditioning unit with individual controls.

How big are the apartments?

These are regular size apartments with a large living-room/dining-area combination, full size kitchen, bedroom, and bath. There is sufficient closet and storage space.

What about laundry facilities?

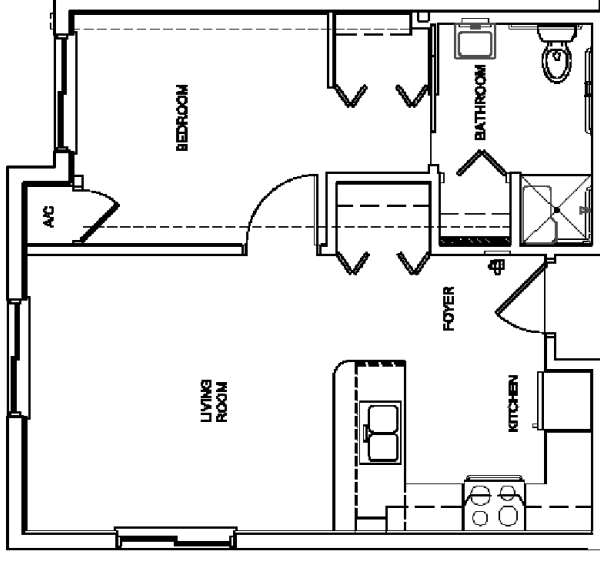
A beautiful laundry room on the first floor includes coin-operated washers and dryers and is open 24 hours a day for your convenience.

What services and activities are available?

Recreational areas for card-playing and other community activities are provided. A common lounge is available for quiet conversation. Assistance is offered in locating area social services available to the residents, and periodic in-house activities, both educational and recreational, are planned.

What about the accessible units?

Some apartments are specifically designed and are accessible for persons with mobility impairments. The sidewalks, entrances, community room and laundry facilities are all accessible for persons with mobility impairments. Upon request, features can be provided for the hearing and visually impaired.



Floor Plan

For a

Typical

One Bedroom

Apartment

